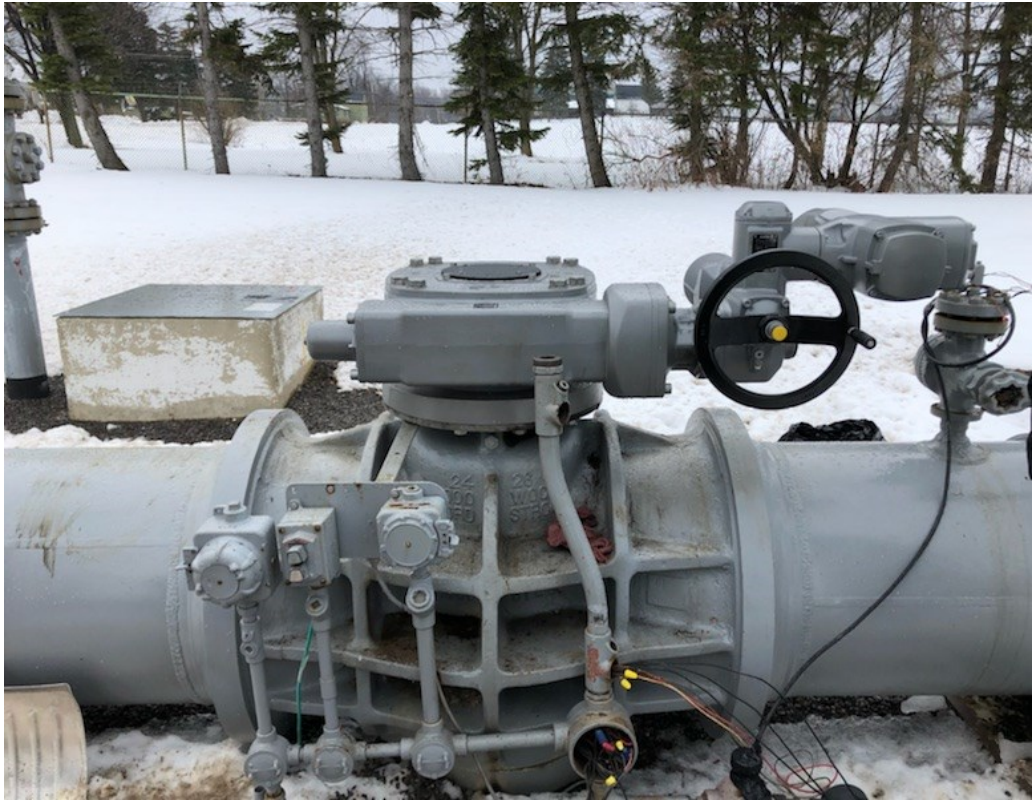


AUMA-USA in Natural Gas Service

AUMA Actuators, Inc. (AUMA-USA)

and **R.M. Headlee** won a job with the largest energy infrastructure company in North America.

This customer operates 152 terminals as well as 85,000 miles of pipelines, which transport natural gas, gasoline, crude oil and carbon dioxide. **AUMA-USA** retrofitted a SAEx/GS with integral AMEx controls on a 26" Rockwell plug valve in early 2018. This was a challenging retrofit as the valve was built in 1950 and



there were no records or torque information available. Therefore, all valve dimensions were measured in the field to assure correct machining of adaptation and mounting plate, which aided in an efficient installation. This particular valve is on the primary discharge pipeline for 900-psig natural gas from the compressor station.

AUMA actuators were installed to replace the competition because the customer was disappointed with the competition's service and reliability of the aging product. **R.M. Headlee** presented **AUMA-USA** as a robust and trustworthy replacement that would decrease operational downtime and provide dependable service.

R.M. Headlee's oil and gas knowledge combined with **AUMA-USA's** ability to design and provide adaptation hardware proved a joint effort in winning the job. The installation was accomplished without shutting down the plant or the valve; thus, allowing the customer to complete the field retrofit quickly and easily. **AUMA-USA** is committed to provide continued after sales and service support and to be your leading manufacturer of electric actuators and gearboxes.

auma®
MANUFACTURED IN USA SINCE 1976

R.M. HEADLEE



VALVES AND CONTROLS



**R.M. HEADLEE VALVE AUTOMATION
FOR THE NATURAL GAS INDUSTRY
ELECTRIC & PNEUMATIC VALVE ASSEMBLIES THRU 48"**



R.M. HEADLEE Your Single Source for Valve Automation



Our valve and actuator brands stand on their own for quality and proven service in the field. Whether you require pneumatic, electric or hydraulic actuation, R.M. Headlee Co., Inc. has the valve - actuator assembly to fit your requirements.



Valve & Actuator Brands You Can Trust



Trunnions to ANSI 2500 / SRV Test Port / Severe Service Trunnions



Electric Actuators / Scotch Yoke

Gas Motor/ Gas Hydraulic



Buffalo Office / Automation Center
3649 California Road
Orchard Park, NY 1412
Phone: (716) 662-9813
Fax: (716) 662-1557
gbeckett@rmheadlee.com

Central New York Office
6041 Rose Arbor Lane
Cicero, NY 13039
Phone: (315) 382-6763
Fax: (716) 662-1557
gthomson@rmheadlee.com

Albany Office
6041 Rose Arbor Lane
Cicero, NY 13039
Phone: (315) 382-6763
Fax: (716) 662-1557
gthomson@rmheadlee.com

Erie, PA Office
3649 California Rd.
Orchard Park, NY 14127
Phone: (716) 662-9813
Fax: (716) 662-1557
rudy@rmheadlee.com



**** SOLUTIONS; THROUGH QUALITY PRODUCTS & SERVICE**** VISIT: WWW.RMHEADLEE.COM